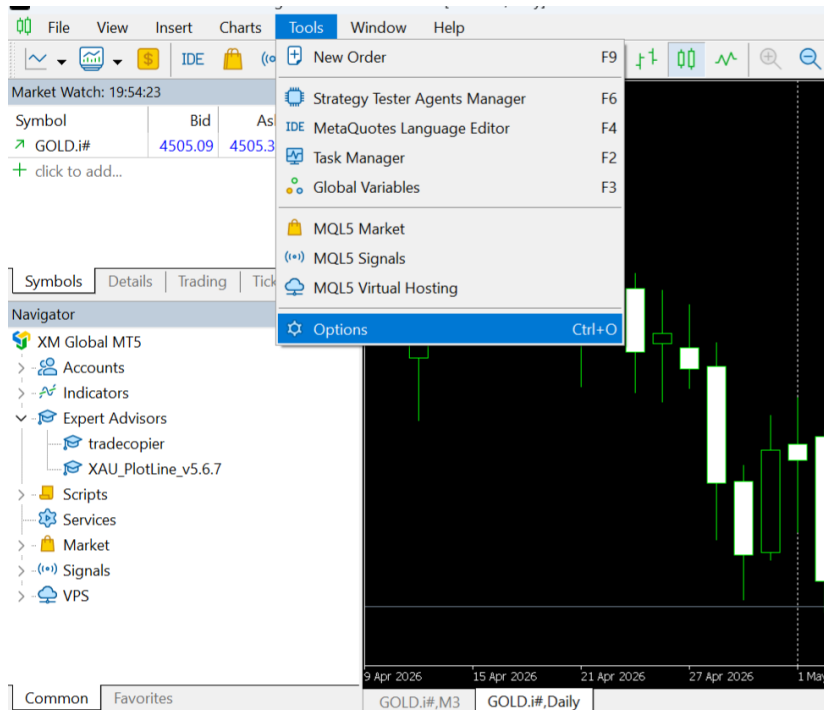
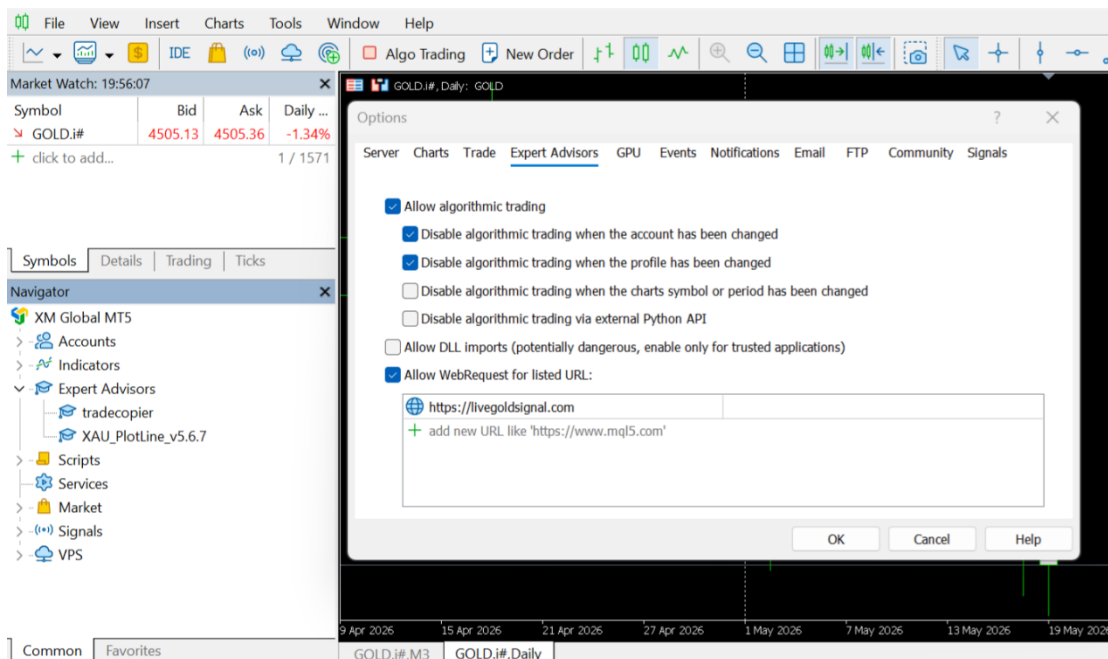


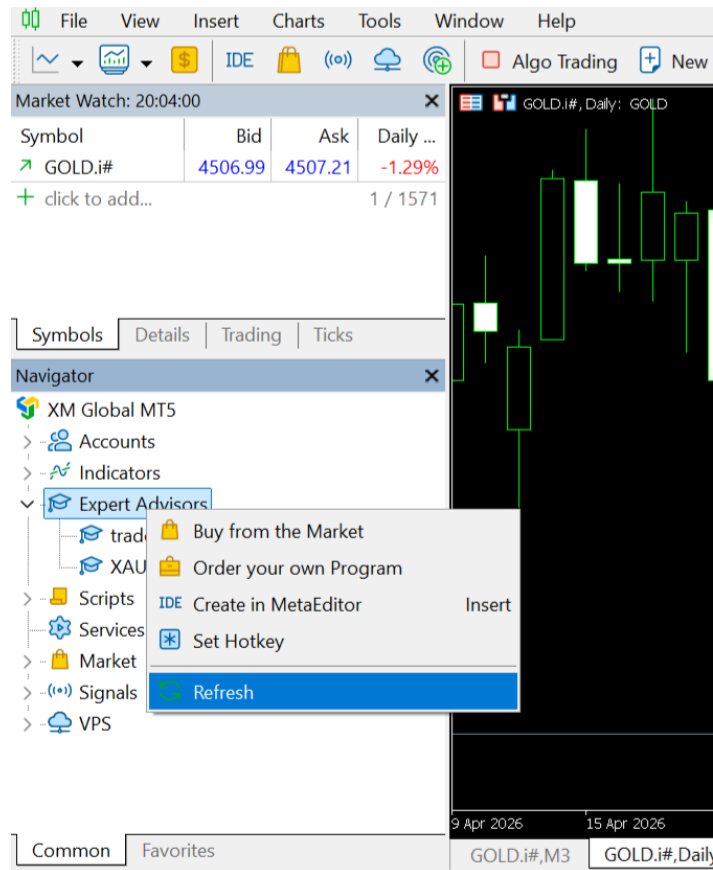
Step 3 — Enable WebRequest in MT5



Click **Tools** in the top menu. Then click **Options**. A window will open. Go to the **Expert Advisors** tab. Make sure **Allow algorithmic trading** is checked. Scroll down and check **Allow WebRequest for listed URL**. In the URL box below, add this URL exactly as shown: <https://livegoldsignal.com> and press Enter. Click **OK** to save.

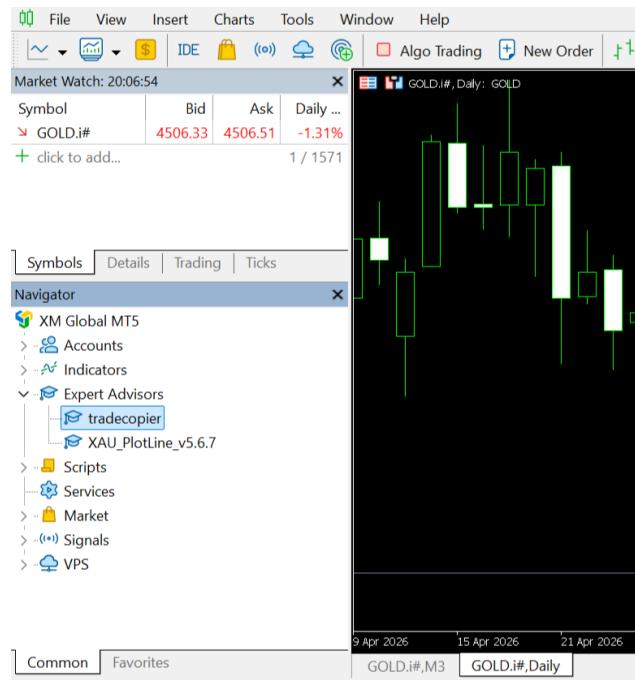


Now go back to MT5, right-click on **Expert Advisors** in the Navigator panel and click **Refresh**. You will see **Tradecopier** appear in the list.

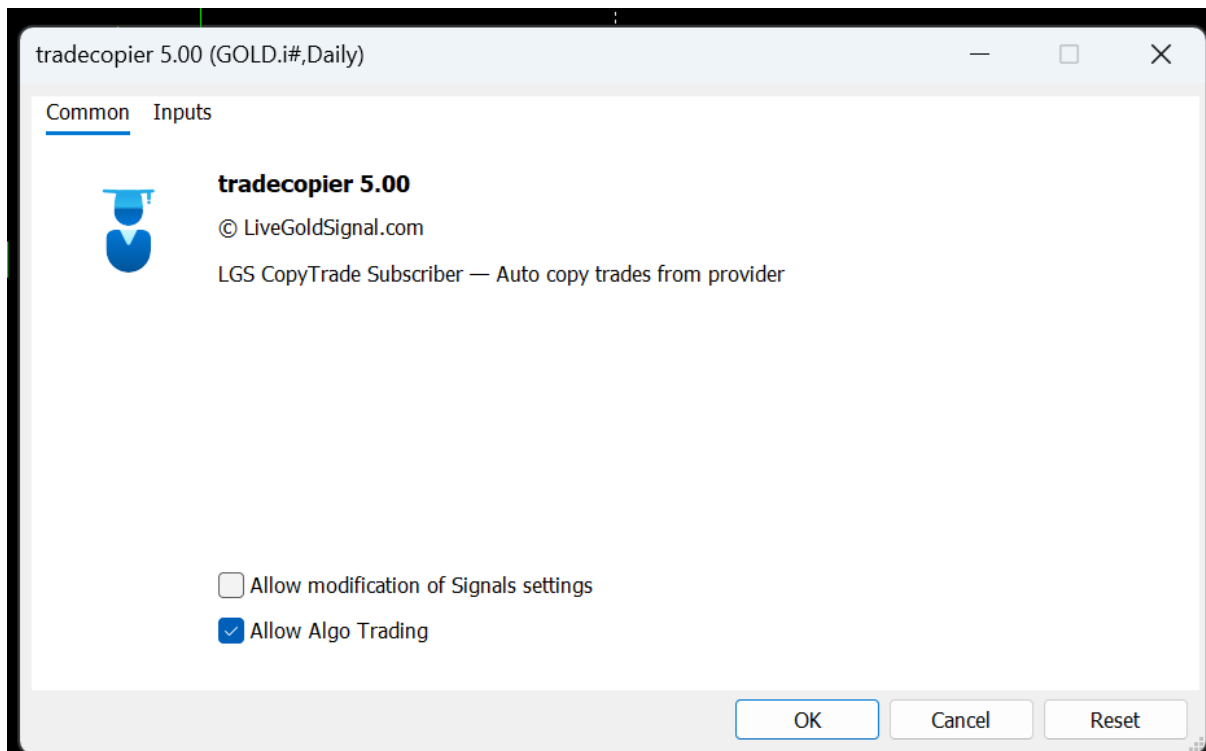


Step 4 — Attach the EA to a Chart

Open any Gold (XAU/USD) chart. From the Navigator panel, drag **Tradecopier** onto the chart. A settings window will open with two tabs: Common and Inputs.



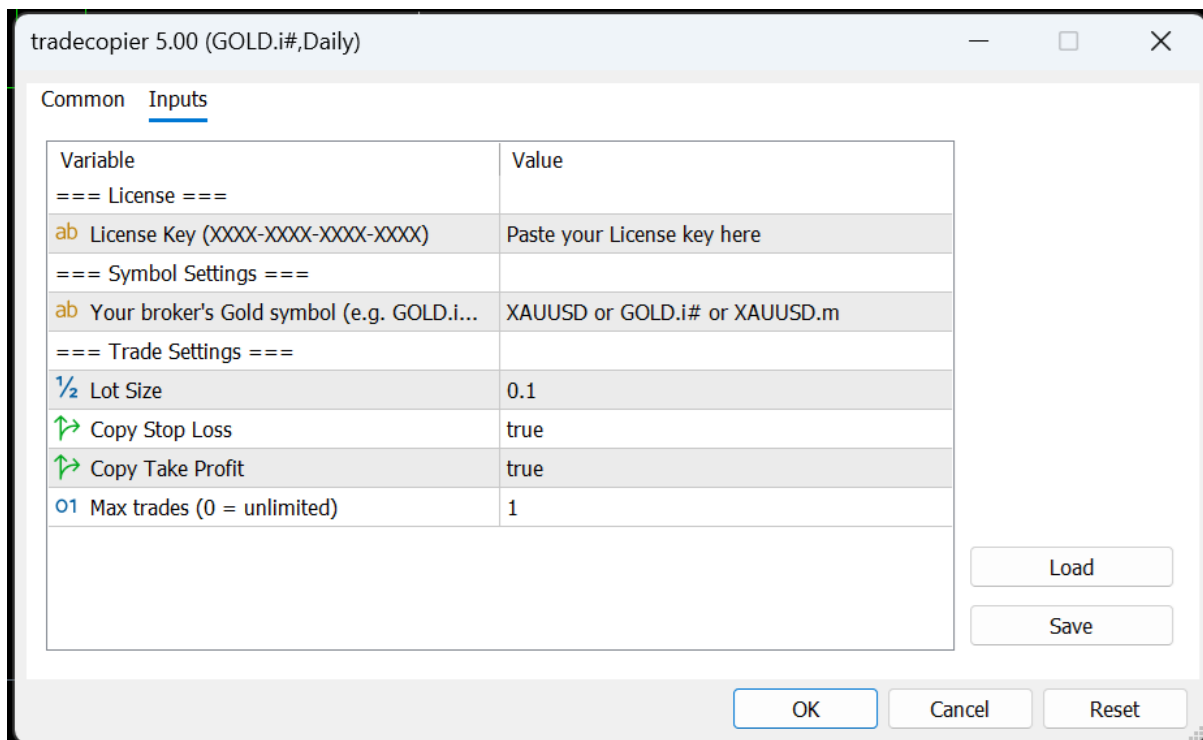
Step 5 — Common Tab Settings



Click the **Common** tab. Make sure **Allow Algo Trading** checkbox is ticked. Then click the **Inputs** tab.

Step 6 — Inputs Tab Settings

In the Inputs tab you will see the following fields. Fill them in as shown below.



License Key — Enter the license key that LiveGoldSignal will send you after subscriptions.

Your broker's Gold symbol — Enter your broker's exact Gold symbol (for example GOLD.i or XAUUSD or XAUUSD.m or XAUUSD.p etc.)

Lot Size — Enter 0.01 or 0.03 or 0.05 or 0.1 or as you wish

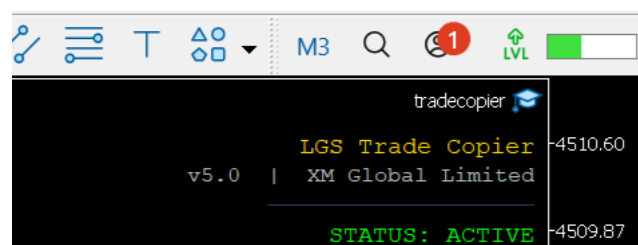
Copy Stop Loss — Set to **true**

Copy Take Profit — Set to **true**

Max trades — 1 or 2 or 3 or as you wish. **Set to 0 (means unlimited)**

Click **OK** to save and wait for the **License key from Livegoldsignal.com**

Step 7 — Confirm EA is Running



Look at the top right corner of your Gold chart. You should see the EA name **Tradecopier** and a blue **Graduation Cap** icon. This confirms the EA is installed and working correctly. Once you receive your license key, go to the **Inputs** tab and enter it there. After entering the license key, the status will show **STATUS: ACTIVE** as seen above.

Step 8 — Wait for Your License Key

After completing the setup, contact LiveGoldSignal to receive your personal license key. Once you enter the license key in the **Inputs tab** and click OK, your account will be connected to the copy trading system and trades will start copying automatically.

Important Note: Your Laptop or Desktop must be kept on with the **Gold chart open** every day (Monday to Friday) during the following times:

GMT / UK Time: 4:00 AM – 3:00 PM

Please follow your local time listed above and keep your Laptop or Desktop running with the Gold chart open during these hours so that all trades are copied correctly without any interruption.